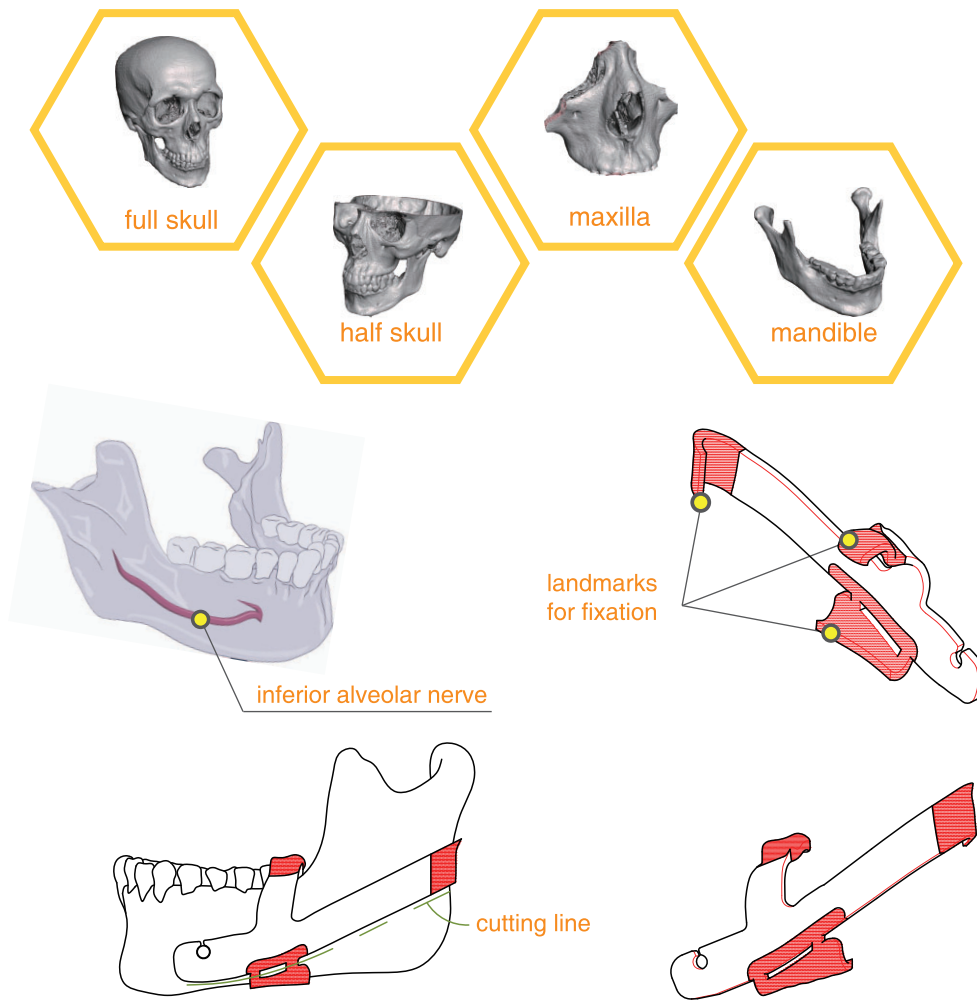




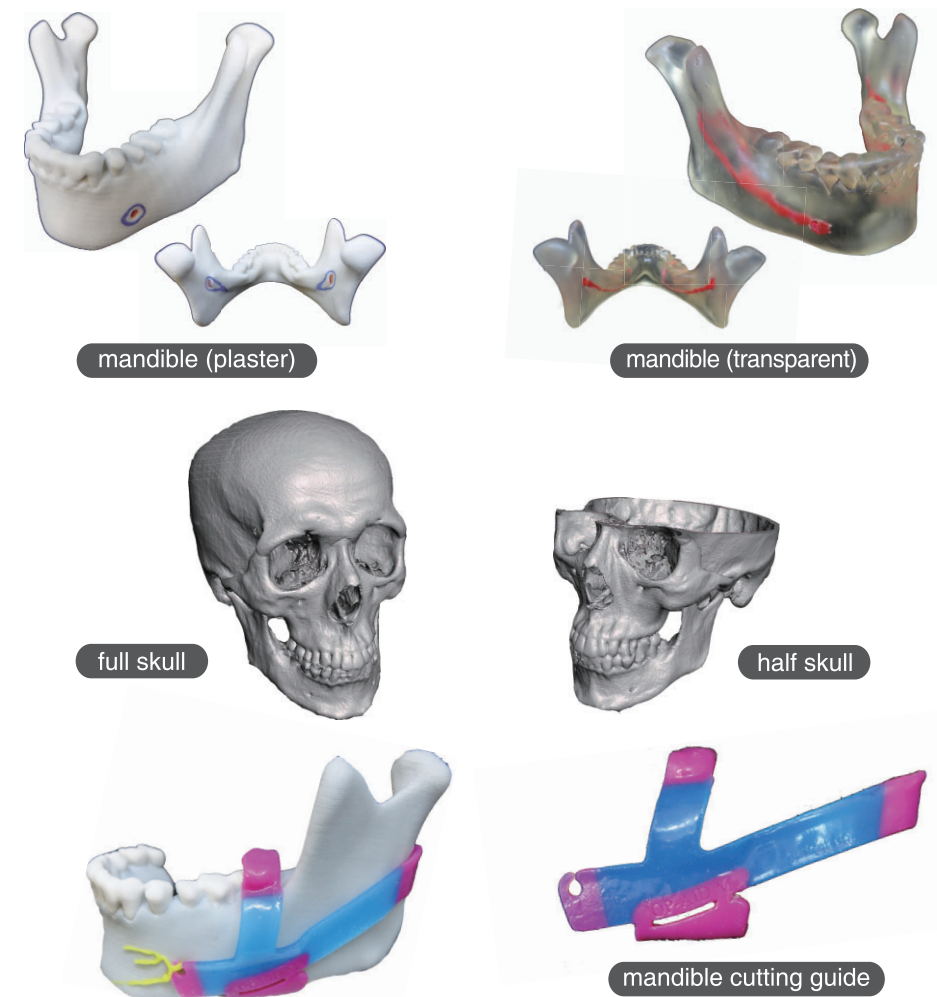
Surgical Simulator and Guide for Hard Tissue Cutting



Features

- ① A 'simulator' provides pre-operative simulation, and a 'guide' does the exact surgical plan for hard tissue incision
- ② A 'simulator' is finished with post-process with self-developed post-bonder to give a realistic feeling and minimize dust generation during cutting simulation
- ③ A 'simulator' indicates the inferior alveolar nerve with the safety margin (1mm off from the nerve with the 1.5mm margin with the ring mark)
- ④ A 'guide' can be fixed with 3 landmarks including a hanging picture of nerve and helps to cut the hard tissue along the planned line steadily and safely with ease

Products



Procedure

